

Distributed by

SONO VIDÉO - MONTRÉAL
 5005, boul. Métropolitain E
 Montréal (Québec) H1R 1Z7
 T. (514) 322-8774 F. (514) 322-7012

SONO VIDÉO - QUÉBEC
 771, rue des Rocailles
 Québec (Québec) G2J 1A2
 T. (418) 622.2966 F. (418) 622-3774

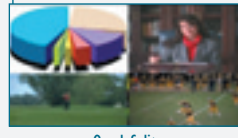
www.sonovideo.com

DIDO

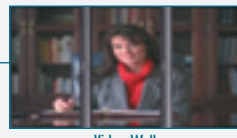
Aurora's DIDO is a Hi-Resolution Scaler with Multi-Image Rotation in a compact enclosure.



Rotated PAP



Quad Split



Video Wall



SPECIFICATIONS

DIDO Specifications

Video Input

Signal Format.....Composite, S-Video, YPbPr, RGBHV, DVI 1.0/HDCP

Supported Resolutions.....1080i, 720p, 480i, 480p, VGA, SVGA, XGA, VGA, XGA, SXGA, UXGA, WUXGA

Connectors2 x 4-pin mini DIN female (S-Video1, S-Video-2) or 2 x RCA phono female to 4-pin mini DIN male adapter (Composite 1, Composite 2) 5 x BNC type male using DVI-I breakout cable (RGBHV / YPbPr) 1 x DVI-D using DVI-I breakout cable (DVI)

Video Output

Signal Format.....DVI-1.0/HDCP, RGBHV / YPbPr

Supported Resolutions.....1080i, 720p, 480i, 480p, VGA, SVGA, XGA, VGA, XGA, SXGA, UXGA, WUXGA

Supported PiP ModesSingle PiP, Translucent PiP, PAP, Side-by-Side, Split Screen with Vertical Stretch, Dual Image Vertical Rotation, Quad Image

Connectors5 x BNC type male using DVI-I breakout cable (RGBHV / YPbPr) 1 x DVI-D using DVI-I breakout cable (DVI)

Audio Input

Connectors2 x Stereo RCA phono female using audio breakout cable

Input.....Unbalanced stereo line level

Audio Output

Connectors1 x Stereo RCA phono female using audio breakout cable

Output.....Unbalanced stereo line level (Audio signals are compensated for propagation delay for correct sync with video. The audio is then sent to the plasma display for amplification.)

Output level.....+12dB to -114dB in 64 steps

Control

Connector6-pin mini DIN female (Control) (6-pin mini DIN male to DB-9 female adapter cable provided)

RS-232/422 Baud Rate9600 bps

Physical

Dimensions(WxDxH) 9.7 x 6.0 x 1.1 inches

Weight.....0.85 lbs. (ASR-44 only)

Power

Operating Voltage.....12 VDC (12 W)

Enclosure

Dimensions (WxDxH)8.4 x 5.7 x 1.0 inches

Weight.....2.5 lbs. (DIDO only)
 4.3 lbs. (Shipping weight)

All trademarks and copyrights are the property of their respective owners. Specifications subject to change without notice.

- It's a video processor, high-performance video scaler, high-resolution PiP generator, and audio/video switcher which supports a wide selection of input and output resolutions and formats with the ability to rotate, stretch and crop multiple images.
- The hi-performance scaler features image enhancing capabilities such as Motion Adaptive De-interlacing, Low-angle Directional Interpolation, 3:2 & 2:2 inverse pull-down, Moiré cancellation color correction, adaptive flesh tone adjustments, image zoom & shrink.
- The powerful AARE (Aurora Advanced Rotation Engine) Picture-and-Picture (PAP) engine offers several modes of operation including:
 1. Hi-resolution Quad Image or Side-by-Side (split-screen) images (perfect for video teleconferencing, security, command and control applications)
 2. Image Rotation (for digital signage)
 3. Translucent Overlays to maximize main image size while still seeing PiP
- Accepts digital and analog video inputs through a combination DVI / RGBHV / YPbPr connector and S-Video/Composite input connectors
- Includes audio propagation delay compensation for correct sync with video



ACCESSORIES



Audio Breakout Cable



S-Video to Composite Adapter



Control Adapter



DVI-I Breakout Cable

- Internal Event Scheduler with Real Time Clock – allow AARE special effects to be scheduled locally and between DIDO units when connected via the RS-485 bus
- Shipped with a Full Featured IR Remote Control and Interface Cables
- Firmware upgradeable. New firmware releases are easily uploaded to the ASR-44 with the Flash utility, both of which are available for free from Aurora's website.